

Supplement to the iX104C² User Manual

iX104C² Dual Mode Controls

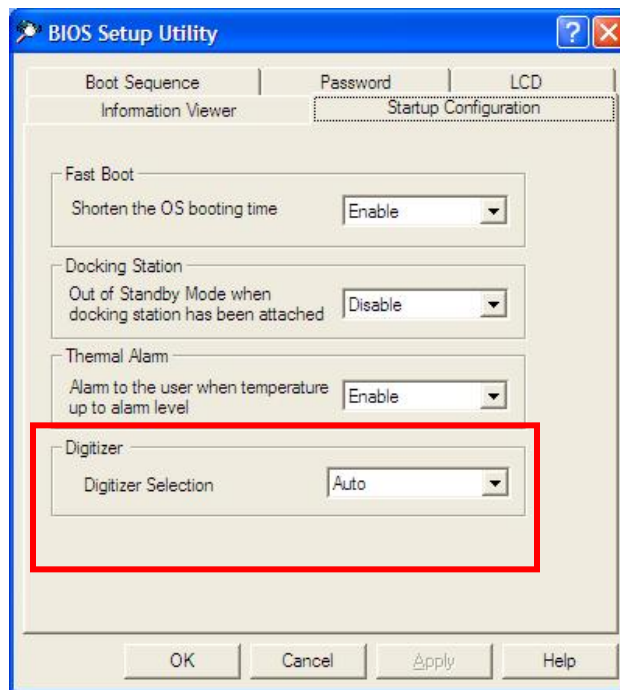
There are two software elements that you can use to control the functionality of the iX104C² Dual Mode: Bios Setup Utility and Panel Control Center.

- **Bios Setup Utility** controls the default boot up settings
- **Panel Control Center** allows for temporary session based settings via the programmable keys.

BIOS Setup Utility

1. Controls:

The Control for the Dual Mode system can be found in Bios Setup Utility under the Startup Configuration in the Digitizer Section:



Digitizer Selection values and meanings

Digitizer Selection	Description	Notes
Auto	Xplore's Auto Sensing feature is enabled allow for automatic sensing of the active pen or Touch inputs. The system manages the input method seamlessly without user intervention	This is the default setting
Touch Only	Turns on Touch input only. Active Digitizer and pen as well as the Auto Sense feature are disabled	
Digitizer Only	Turns on Active Pen input only. Touch Panel and Auto Sense features are disabled.	For iX104C2 and iX104C2V this is the default setting and cannot be changed

2. Security:

To allow or disallow User control of the input method use the Bios Setup Utility Supervisor password.

Password Setting	Description	Notes
No passwords set	Control can be changed by anyone	This control is not controlled by Windows User groups
Supervisor password set only	Control can be only changed by entering Supervisor password	The password will be prompted prior to Bios Setup Utility will open
User Password set	Controls are disabled	Only the supervisor can change digitizer controls

3. Changing values:

Anytime the value is changed the Bios Setup Utility will prompt for the unit to be rebooted when the OK button is clicked. It is strongly recommended to reboot the system after changing this value.

This value will now be the default input mode.

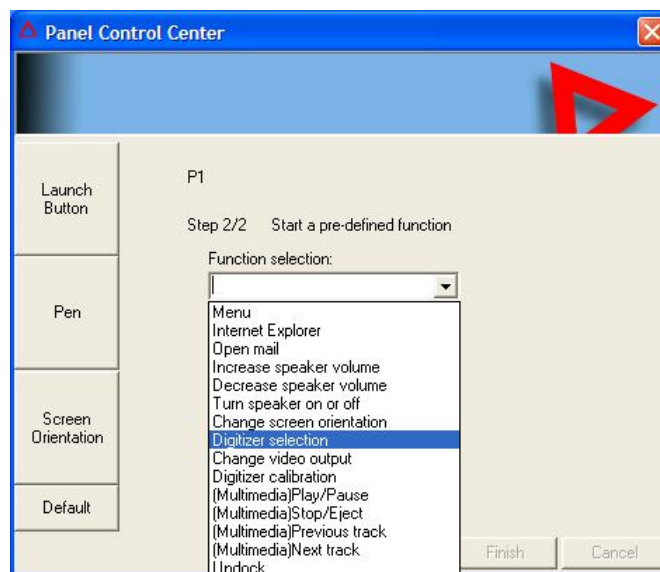
Panel Control Center

Panel Control Center allows for temporary, session-based changes to iX104C2 Dual Mode unit functions. Upon a reboot or a restart of the system these settings are lost and the default value set in BIOS SETUP UTILITY are restored.

By default these controls are not set by Panel Control Center and will need to set by the Administrator account of the tablet. (Any user that has administrator rights). The functions will be dependent on the value set in the Bios Setup Utility.

To setup, click on Panel Control Center (triangle icon in the System Tray)

- > Click on the configure button
- > Click the Change Button next to the P Key desired and
- > Choose Predefined Function as shown below




There are two pre-defined functions; **Digitizer Selection** and **Touch Panel Toggle**.

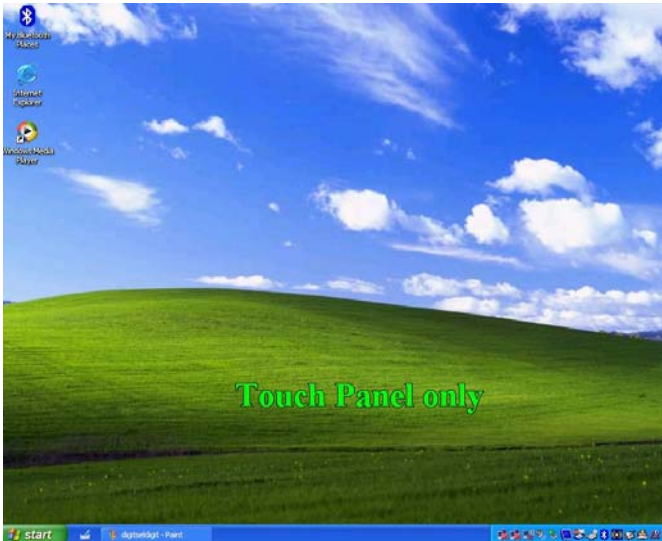
Pre-Define Function	Description
Digitizer Selection	This will toggle from AUTO to Digitizer Only to Touch Only , when Bios Setup Utility is set to AUTO .
Touch Panel Toggle	This will disable the Touch Panel if you desire to turn off the Touch input temporarily when in the Touch only or Auto Modes.

Since the above Pre-defined functions are dependent on the Bios Setup Utility, the following chart show the functions and results:

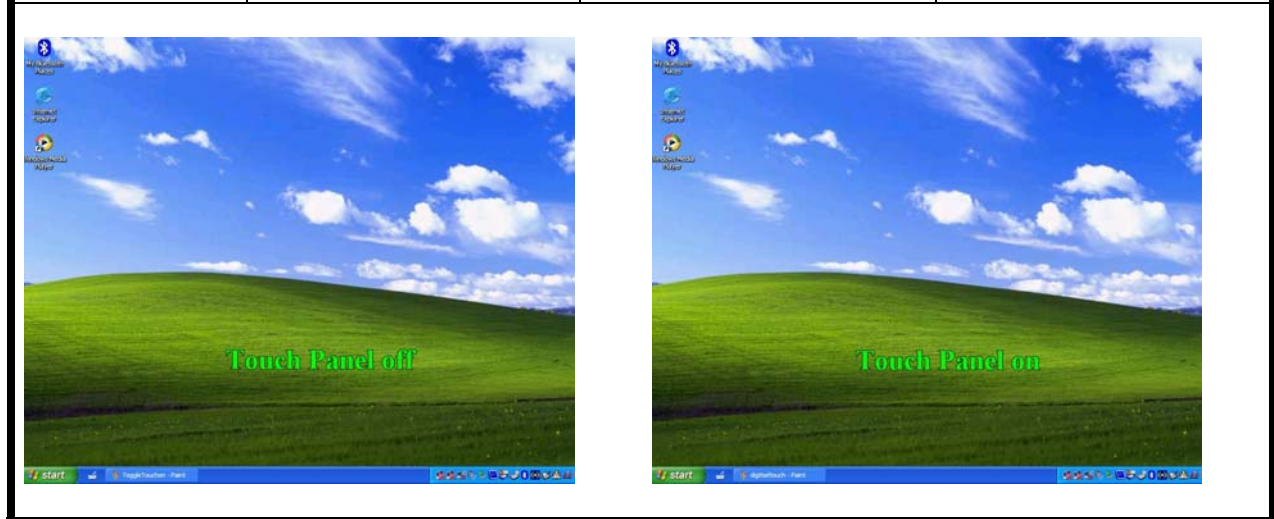
Bios Setup Digitizer Selection Value	Pre-Define Function	On-Screen Description when key is pressed	Notes
Digitizer Only	Digitizer Selection	Digitizer Only will display	Since Digitizer only is selected there is no other input available. Digitizer is left functioning.



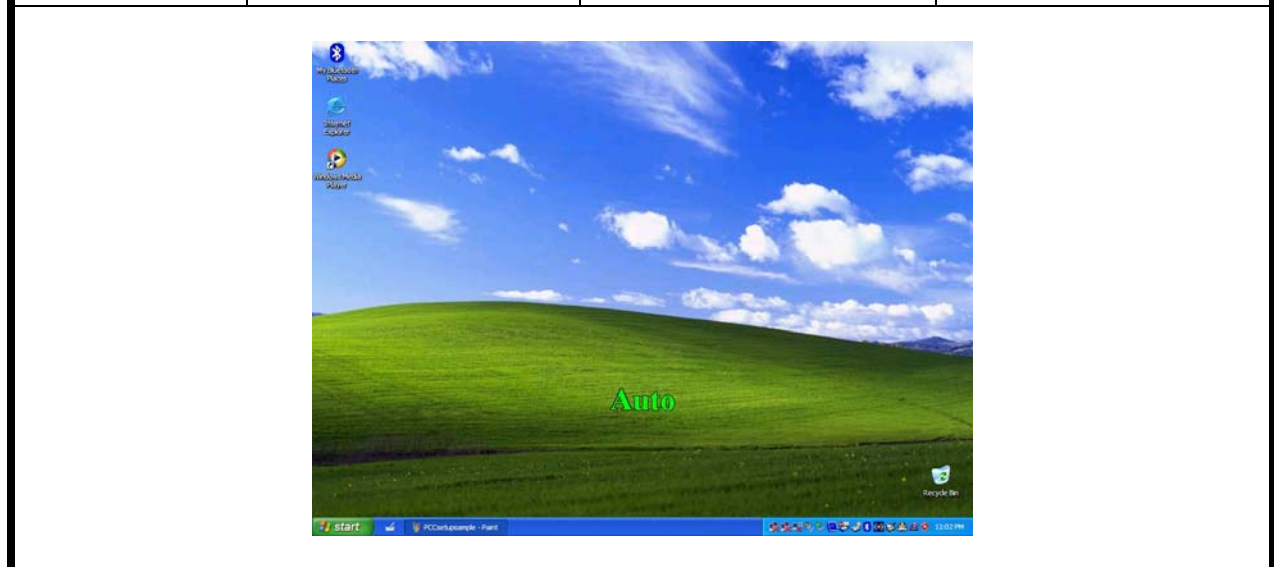
Bios Setup Digitizer Selection Value	Pre-Define Function	On-Screen Description when key is pressed	Notes
Digitizer Only	Touch Screen Toggle	Digitizer Only will display	Touch Screen is disabled already.
			


Bios Setup Digitizer Selection Value	Pre-Define Function	On-Screen Description when key is pressed	Notes
Touch Only	Digitizer Selection	Touch Only will display	Since Touch only is selected there is no other input available Touch is left functioning.
			

Bios Setup Digitizer Selection Value	Pre-Define Function	On-Screen Description when key is pressed	Notes
Touch Only	Touch Screen Toggle	Touch Screen Off/On	This will turn on or off the Touch Screen. Note, if touch screen is off and unit goes into standby or hibernate Touch Screen will automatically be turned back on.



Bios Setup Digitizer Selection Value	Pre-Define Function	On-Screen Description when key is pressed	Notes
Auto	Digitizer Selection	Auto, Digitizer only or Touch only	This rotates through each mode and displays that mode



Bios Setup Digitizer Selection Value	Pre-Define Function	On-Screen Description when key is pressed	Notes
Auto	Touch Screen Only	Auto or Digitizer Only	This function turns on or off the touch panel.
			

Examples of implementation:

Sample 1

Power users or limited users to have Touch only with the ability to turn off the touch screen. Users do not have option to change any controls.

Setup:

1. Set a Supervisor password in Bios Setup utility. (This will protect the digitizer selection, for that matter all bios setup utility controls)
2. Set one of the P Keys to Touch Panel Toggle in Administrator mode (Windows)
3. Create User Account (Add new user). Or if user is already created the setting the admin has set will replicate to all users on the unit.

Sample 2

Power user or limited users to default to Auto Sense but allow temporary selection. Users have the option to change the default.

Setup:

1. Do not set a Supervisor password (leave open)
2. Set one of the P Keys to Digitizer Selection
3. Create User Account (add new User)