

Logging On to the Tablet PC

After turning on your Tablet PC, you will be guided through a set-up process, or your IT department may have provided you with a password.

Once the initial setup of your system is completed and you have created a system password, you are ready to log on.

1. When prompted, press the Ctrl+Alt+Del button located on the front of your Tablet PC (labeled with a key icon).



Ctrl+Alt+Del Button

2. Using the pen and the on-screen keyboard, tap in your password.

Getting Started

Familiarize yourself with the following reference materials:

1. Complete the interactive *Get Going with Tablet PC* tutorial. (Start > All Programs > Tablet PC > Get Going with Tablet PC)
2. Complete the other useful *Tablet PC Tutorials*. (Start > All Programs > Tablet PC > Tablet PC Tutorials)
3. Open and review the Motion Dashboard. (Start > All Programs > Motion Resources > Motion Dashboard)
4. Refer to the *Motion User Guide* if you have any questions. (Start > All Programs > Motion Resources > User Guide)

Using the Pen

Using the Tablet PC pen is similar to using a mouse. To right-click, hold down the Function Button on the pen.

The following table explains the similarities between a Tablet PC pen and a mouse.

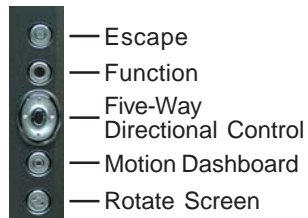
Function	Mouse Action	Pen Action
Select	Point and click	Point and tap the display
Open an application or file	Double-click	Double-tap on the display
Select and drag	Click and drag	Tap and drag on the display
Display properties or edit functions (cut, copy, paste)	Right-click and hold	Press and hold the pen Function Button, then tap the screen; or, hold the pen on the display until the mouse icon appears, and then remove the pen tip from the display

Helpful Pen Tips


- Hold the pen like a regular pen.
- Do not position your finger on the Function Button.
- Rest your hand on the screen.
- To change from right- to left-handed usage.
 - a. Open Motion Dashboard (see Getting Started).
 - b. On the Pen & Digitizer panel, select Pen & Button Options, and then select Tablet and Pen Settings.
 - c. In the Settings tab, choose left-handed.
- Calibrate the digitizer and pen for better cursor alignment.
 - a. Open Motion Dashboard (see Getting Started).
 - b. On the Pen & Digitizer panel, select Calibrate Digitizer, and then follow the instructions.



Using the Tablet PC Buttons



Helpful Tip:
Use the Function button to activate the secondary functions of the Directional Control, Motion Dashboard and Rotate buttons.

 To activate or deactivate the wireless radios, press the wireless button on the left side of the Tablet PC (when in primary landscape mode) for at least one-half second.

For more information, see the *Motion User Guide*.

Optimizing Battery Life

- Use AC power when available.
- Open the Motion Dashboard; on the Display panel, adjust the brightness to the lowest comfortable brightness level.
- Set the Power Button to Stand By or Hibernate: to conserve battery power; to quickly power on and off; or when not in use.
- When not in use, turn off wireless radios in Motion Dashboard.
- For advanced tips about extending the battery life, go to www.motioncomputing.com/tips.

Using Speech Recognition

1. For information about configuring the Tablet PC microphones, see "Introduction to Speech" in the *Motion User Guide*.
2. Complete the *Using Speech Recognition* tutorial. (Start > All Programs > Tablet PC > Tablet PC Tutorials > Speech)

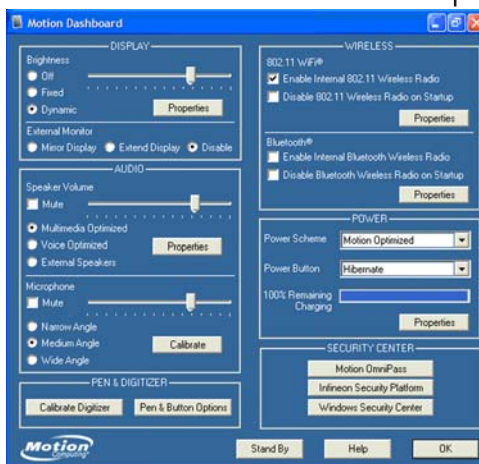
Motion™ Dashboard Settings

Open the Motion Dashboard by pressing this button on the front of the Tablet PC.



- Adjust brightness —
- Use "Mirror" for a projector
Use "Extend" for two monitors
- Control audio playback —
- Configure microphones
and Speak Anywhere™
- Calibrate the digitizer, or
customize pen and buttons

Click here to change views



Classic View

- Turn 802.11 on or off
- Turn Bluetooth® on or off
- Adjust power settings
- Configure power button for off, Hibernate or Stand By mode
- Configure security settings



Category View

Entering Text and Data

1. To open the Tablet Input Panel (TIP), tap inside a text field, and then tap the floating TIP icon.



TIP Icon

Or, tap the TIP icon to the right of the Start button to open the TIP.



TIP Icon

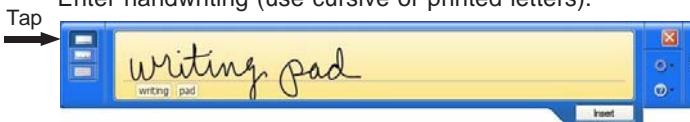
2. Select one of the three TIP input modes, then enter your data. See illustrations to the right.

Helpful Hints

- To move the TIP, grab the move bar on the right side of the TIP, and move the window.
- To dock the TIP at the top or bottom of the screen, tap the Tools and Options icon (⚙️).
- To access TIP settings, tap the Tools and Options icon (⚙️), and select Options.
- To learn how to use ink in Microsoft® Office applications, go to www.motioncomputing.com/tips.

Mode 1: Handwriting Input

Enter handwriting (use cursive or printed letters).



Mode 2: Character Input

Enter characters one at a time.



Mode 3: Keyboard Input

Tap the on-screen keyboard.



Using Bluetooth

To use the built-in Bluetooth radio:

1. Enable the Internal Bluetooth Wireless Radio.
 - a. Open the Motion Dashboard.
 - b. On the Wireless panel, check Enable Internal Bluetooth Wireless Radio.
2. Make the Bluetooth device, e.g. keyboard or mouse, discoverable so the Tablet PC will detect it. See the Bluetooth device instructions for specific steps to put the device into discoverable mode.
3. Complete the Bluetooth Setup Wizard.

See the *Motion User Guide* for step-by-step instructions.

Configuring the Fingerprint Reader



User Authentication

Use the Fingerprint Reader for user authentication and password replacement.

Use Motion OmniPass™ to set up the Fingerprint Reader.

1. Open Motion Dashboard (see Getting Started).
2. In the Security Center panel, select Motion OmniPass.
3. See the *Motion User Guide* for more information.

Scrolling

The Fingerprint Reader can be used to scroll vertically in documents and web pages.

